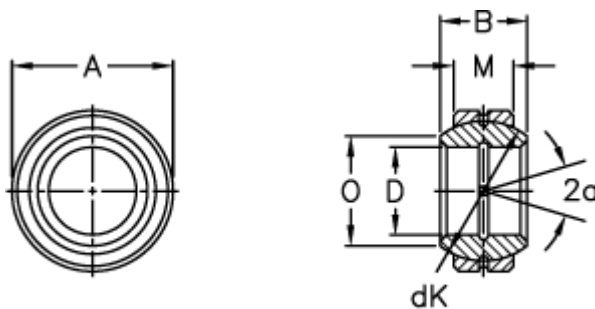


Article number: 03505100

Description: Fluro Rod end GE 100FO

Measures



Str. 6–12 uden smørerille

A = 160 0 -0,025

B = 85

D = 100 0 -0,020

dK = 140

Dynamic load C (kN) = 655

M = 55

O = 111.2

Static load C0 (kN) = 3250

Tilt angle = 14

Weight = 5900